

# INVESTMENT SCHEDULE



**PREPARED FOR**

**LLPS, INC**

**October 21, 2022**

**PREPARED BY**

**Jackie St.Germain**

**248-238-0817**

**[jackie.stgermain@tbs.toshiba.com](mailto:jackie.stgermain@tbs.toshiba.com)**

**TOSHIBA**

**TOSHIBA**

# EMPOWERING THE ART OF BUSINESS®



**At Toshiba, we are focused on helping businesses better control their productivity and profitability by delivering innovative imaging products and content solutions.**

## **TOSHIBA AMERICA BUSINESS SOLUTIONS, INC. (TABS)**

is an independent operating company of Toshiba Corporation, one of the largest integrated electronics and electrical equipment companies in the world with more than 140,000 employees globally and annual sales surpassing \$37 billion. TABS is a leading managed print and content solutions provider with experts that help organizations print smarter, improve workflow and communicate better.

Our current and future commitment is to continue to improve and enhance the functionality and capabilities of our digital imaging products and content solutions. Toshiba invests more than 6% of its annual revenue to Research & Development, and deploys a network of R&D centers around the world. In an average year, Toshiba Corporation is awarded more than 5,000 patents, many of which find their way either directly or indirectly into our multifunction office solutions products.

## **OUR MISSION**

As a technology company, we go way beyond printing. We are a creative and nimble organization that empowers our people to do whatever it takes to help our clients succeed.

## **OUR VISION**

Empowering new and better ways to deliver ideas and information.



## INVESTMENT SCHEDULE

### LLPS OPTION 1: TOSHIBA E-STUDIO 908

#### Proposed Solution

- Toshiba Advanced Scanning scans up to 240 images per minute & scans both sides of a document with a single passage. Toshiba scanning also allows you to omit blank page if you would like help to decrease file sizes.
- Toshiba Total Quality Commitment allows you to be backed by direct manufacturer, we use all OEM parts & supplies. Free replacement if ever needed throughout the program.
- ATM Technology
- 15.4" Display Panel
- 250 Page Document Feeder
- Saddle Stitch Booklet Staple and Fold Finisher
- Hole Punch
- Curl Correction Unit



## SPEED & RELIABILITY, IDEAL FOR CRD OR DEPARTMENTAL USE

The Toshiba e-STUDIO908 is up to the task of serving the busiest departmental office needs. With a duty cycle of 1,000,000 impressions per month, a toner yield of 120,000 and a maximum paper capacity of 8,500 sheets, you can see that volume is the name of the game. Users also appreciate the wide variety of paper options including a compact A4 external LCF, an A3 LCF and even a 2 drawer air-feed assist LCF. Need more paper? You can add the 500-sheet bypass on top of that. A 2 tray inserter that allows users to add pre-printed covers or inserts.

The 250 sheet Dual Scan Document Feeder (DSDF) scans big jobs in record time. The fast processor, 6GB RAM and 1 Terabyte HDD mean your jobs will get processed quickly. Genuine Adobe PostScript 3 provides assurance to document creators that the job they submitted is the job they'll receive in the exit tray. A 10.1" touchscreen front panel makes programming complex jobs easy and accessing the walk-up fax feature.

### FEATURES AT A GLANCE

- **Copy/Print Speed:** 90 PPM
- **Print Resolution:** 1,200 x 1,200 dpi (With
- **Scan:** 240 IPM Duplex / 120 IPM Simplex
- **First Copy Out:** 4.0s
- **Paper Capacity:** Standard 3,100 Sheets / Max8,500
- **Seperately Adressable Built-in LCF (Tandem Drawer)**
- **Memory:** 6GB
- **1 Terabyte HDD**
- **Reproduction Ratio:** 25% to 400%
- **Max Duty Cycle:** 1,000,000 Month
- **10.1" Color WVGA Touch Screen Tilting Display**



**e-STUDIO™ 908**

### POPULAR OPTIONS

5,000-Sheet Large Capacity Feeder
100-Sheet Staple Finisher
100-Sheet Saddle-Stitch Finisher
Hole Punch Unit
2-Tray Interposer
Trimmer Unit
Fax Unit



# INVESTMENT SCHEDULE

## Proposed Solution

### Model Details

- (1) Toshiba e-STUDIO908
  - Included Features: 100-sheet Saddle Stitch Finisher, Punch Unit, Curl Correction Unit

### Service Details

Pool Name	Monthly Pages Included	Monthly Overage Per Page
Mono Pool	0-pay per print in arrears	\$0.00460

Purchase Price

\$21,750.00

Monthly investment includes parts, labor, travel, and supplies; everything except for paper, staples, and applicable taxes.

If you would like to lease:

63 FMV Lease

\$429.00

## INVESTMENT SCHEDULE

### LLPS OPTION 2: TOSHIBA E-STUDIO 8515A

#### Proposed Solution

- Toshiba Advanced Scanning scans up to 240 images per minute & scans both sides of a document with a single passage. Toshiba scanning also allows you to omit blank page if you would like help to decrease file sizes.
- Toshiba DSDF Document Feeder holds up to 300 pages in the feeder.
- ATM Technology
- Advanced Scanning
- Toshiba has industry leading (4) GB OF RAM which helps spool large print and scan jobs quicker.
- Transfer Belt Technology
- Hole Punch
- Saddle Stitch Booklet Staple Finisher and Fold

# TOSHIBA

## FASTER, SLEEKER, AND MORE VOLUME THAN EVER

The Toshiba e-STUDIO8518A looks great inside and out. Along with an ultra-modern look, you'll also find innovative technology like crisp, clean monochrome output delivered at up to 85 pages per minute with an impressive 6,020-sheet maximum capacity. New high-speed, high-capacity Dual-Scan Document Feeder handles up to 300 sheets at a time and seamlessly scans both sides of each page in a single pass at 240 images per minute.

Improve productivity and connectivity while simplifying overall workflow. The e-BRIDGE Print & Capture application provides the ability to scan from the MFP back to your mobile device. Multi-Station Print Enabler allows users to retrieve print jobs at any convenient MFP by simply swiping their badge and authenticating at that device. Also, a new 10.1" tablet-style touch screen with an embedded web browser is easy to use and customizable to meet your needs.

### FEATURES AT A GLANCE

- **Copy/Print Speed:** 85 PPM
- **Print Resolution:** 2,400 x 600 dpi (With Smoothing), Up to 3,600 x 1,200 dpi (PS Only)
- **Scan:** 240 IPM Duplex / 120 IPM Simplex
- **First Copy Out:** 4.1s
- **Paper Capacity:** Standard 3,520 Sheets / Max 6,020 Sheets (Tandem Drawer)
- **Memory:** 4GB
- **Reproduction Ratio:** 25% to 400%
- **Max Duty Cycle:** 720K Month
- **9" Color WVGA Touch Screen Tilting Display**



**e-STUDIO8518A**

### POPULAR OPTIONS

2,500-Sheet Large Capacity Feeder
50-Sheet Staple Finisher
50-Sheet Saddle-Stitch Finisher
Hole Punch Unit
Side Exit Tray
Wireless LAN/Bluetooth Module
Fax Unit / 2nd Line for Fax Unit



# INVESTMENT SCHEDULE

## LLPS OPTION 2:

### Proposed Solution

#### Model Details

- (1) Toshiba e-STUDIO8518A
  - Included Features: Saddle Stitch Finisher, Hole Punch

#### Service Details

Pool Name	Monthly Pages Included	Monthly Overage Per Page
Mono Copier Pool	0-pay per print in arrears	\$0.00560

Purchase Option

\$11,985.00

Monthly investment includes parts, labor, travel, and supplies; everything except for paper, staples, and applicable taxes.

63 MONTH FMV LEASE.....

\$240.00

## INVESTMENT SCHEDULE

### LLPS OPTION 3: TOSHIBA COLOR E-STUDIO7516AC

#### Proposed Solution

- Toshiba DSDF Document Feeder holds up to 300 pages in the feeder.
- Toshiba Advanced Scanning scans up to 240 images per minute & scans both sides of a document with a single passage. Toshiba scanning also allows you to omit blank page if you would like help to decrease file sizes.
- Toshiba Banner Printing helps to eliminate outsourcing and print up to 47.24 inches long, near full bleed high end color quality.
- ATM Technology
- Advanced Color Quality
- Advanced Scanning
- Mobile Print & Capture
- Saddle Stitch Booklet Staple Finisher and Fold
- Hole Punch

# TOSHIBA

## TOSHIBA INNOVATION AT ITS FINEST

The ultra-modern look of the Toshiba e-STUDIO7516AC houses the latest innovative technology, like brilliant, multi-beam laser color delivered at up to 75 pages per minute and monochrome at up to 85 pages per minute. New high-speed, high-capacity Dual-Scan Document Feeder handles up to 300 sheets at a time and seamlessly scans both sides of each page in a single pass at 240 images per minute.

When it comes to seamless workflow and simplified integration the e-STUDIO7516AC represents the finest Toshiba has to offer. A new 10.1" tablet-style touch screen with an embedded web browser is easy to use and customizable to meet your needs. The e-BRIDGE Print & Capture application lets you scan from the MFP back to your mobile device. Multi-Station Print Enabler allows you to retrieve your print job from a series of networked MFPs via simple authentication.



**e-STUDIO7516AC**

### FEATURES AT A GLANCE

- **Copy Speed:** 75 PPM CLR / 85 PPM B&W
- **Copy Resolution:** 600 x 600 dpi
- **Print Resolution:** 1,200 x 1,200 dpi
- **Scan:** 240 IPM Duplex / 120 IPM Simplex
- **First Copy Out:** 5.4 Sec CLR / 4.1 Sec B&W
- **4-Drawer Paper Capacity:** 2,280 Sheets / Max 4,780 Sheets
- **Tandem Drawer Paper Capacity:** 3,520 Sheets / Max 6,020 Sheets
- **Memory:** 4GB
- **Reproduction Ratio:** 25% to 400%
- **Max Duty Cycle:** 590K Month
- **9" Color WVGA Touch Screen Tilting Display**

### POPULAR OPTIONS

2,500-Sheet Large Capacity Feeder
50-Sheet Staple Finisher
50-Sheet Saddle-Stitch Finisher
Hole Punch Unit
Side Exit Tray
Wireless LAN/Bluetooth Module
Fax Unit / 2nd Line for Fax Unit



# INVESTMENT SCHEDULE

## LLPS OPTION 3:

### Proposed Solution

#### Model Details

- (1) Toshiba e-STUDIO7516ACT
  - Included Features: Saddle Stitch Finisher, Hole Punch

#### Service Details

Pool Name	Monthly Pages Included	Monthly Overage Per Page
Mono Pool	0-pay for prints in arrears	\$0.00650
Color Pool	0-pay for prints in arrears	\$0.04630

Purchase Option

\$13,875.00

Monthly investment includes parts, labor, travel, and supplies; everything except for paper, staples, and applicable taxes.

63 MONTH FMV LEASE.....

\$275.00



# OUR QUALITY COMMITMENT

The Toshiba Quality Commitment is our guarantee that you're getting the utmost in advanced technology, dependability, service and support. Toshiba stands squarely behind our promise with the assurance of complete satisfaction. Everything we do contributes to that goal—from setting the industry standard for research and development, to providing timely access to Toshiba support personnel. Look around. Nothing compares to Toshiba...quality guaranteed.

**NO FINE PRINT. NO STRINGS ATTACHED.  
HERE'S HOW THE GUARANTEE WORKS.**

## **FREE REPLACEMENT**

If your Toshiba manufactured copier, facsimile, printer, thermal barcode printer or its accessories do not operate within Toshiba's product specifications during the term of this program, and if the equipment cannot be repaired to perform within product specifications, Toshiba will replace the copier, facsimile, printer, thermal barcode printer or accessory at no charge with a model of equal or better features and specifications.

## **FREE LOANER**

If your Toshiba manufactured copier, facsimile, printer or thermal barcode printer is out-of-service more than two (2) consecutive business days after notifying your Authorized Toshiba Servicing Dealer or requires off-site service, a loaner copier, facsimile, printer or thermal barcode printer will be provided by the Authorized Toshiba Servicing Dealer at no additional charge.

## **TERM OF PROGRAM**

The term of this program is: a) for purchased equipment, three years from equipment installation date or maximum number of copies as stated in the product specifications, whichever occurs first; or b) for leased or rental equipment, three years or the length of the original lease starting from the equipment installation date, whichever is longer.





# TOSHIBA

## SERVICE

### PROFESSIONAL, ACCOUNTABLE, RESPECTFUL

#### BACKBONE OF THE BUSINESS

Getting it right the first time is the goal of our team of Toshiba Service Technicians. These tenured professionals focus on creating the best customer experience for our clients, with minimal downtime.

#### WHY CHOOSE TOSHIBA

Employees are empowered to do what's right for the client

Team members are certified in Toshiba and partner devices

30% of all service issues are often solved remotely via Help desk

Clients know when to expect us with our courtesy call-ahead

#### ABOUT OUR TEAM

Toshiba service technicians are part of the communities they serve. Here are some other interesting facts you may not know...

40%

40% of our employed field service team members are Veterans

15

Our technician tenure averages 15 years of experience

4.85

Toshiba technicians average a 4.85 out of 5 client satisfaction rating

\*\*About our techs statistics from 2021

Looking for a Toshiba service technician in your area? Find an office near you.  
[tbs.toshiba.com](https://tbs.toshiba.com)

# TOSHIBA

## TOSHIBA SERVICE



**Toshiba is recognized as a service leader, as evidenced by numerous industry awards and an outstanding performance record.**

When a Toshiba system needs service clients can rest assured our number one priority is to minimize any inconvenience and downtime. Respond, Respect, Resolve is our team mantra from our client service centers located across the country to our factory-trained certified technicians. We have proven the effectiveness of our service model on thousands of contracts where we provide equipment services and fleet optimization. Toshiba has various levels of service to meet client needs, and with Toshiba's eBridge Cloud Connect tool we can often detect and remotely fix an issue before clients even notice, reducing their burden and increasing uptime.

### **Toshiba service includes:**

- **Client Service Call centers with Toshiba Business Solutions marketplaces to receive calls directly from clients and then dispatch service technician if site visits are required.**
- **Local service teams within each TBS market.**
  - Technicians assigned to territories closest to their homes
  - Professionally trained teams with average tenure of 15 years
- **Call-ahead notification from responding technician so you'll know when to expect us.**
- **Local parts warehouses.**
  - Individual technician car stock on most popular replacement parts to ensure maximum uptime
  - Direct ship of needed parts to a technician's home
- **Preventative Maintenance to ensure systems are always running at optimum levels. This includes identifying potential problems and correcting them before they occur.**
- **Escalation management process that is clearly defined to resolve poor performance issues quickly, efficiently, and to your complete satisfaction.**

**TOSHIBA**



# EMPOWERING THE ART OF INTEGRATED SOFTWARE SOLUTIONS

Toshiba understands the multifunction product is just the beginning. That's why we leverage innovative software and programs that help you increase efficiency and eliminate waste.

No matter what industry you are in or the size of your organization, we have the right solution for you.



## QUICK, EASY, SECURE ACCESS

All Toshiba MFPs come equipped with e-BRIDGE productivity enhancement tools which enable quick, easy and secure access to commonly used business collaboration tools. But the productivity doesn't stop there. We've selected leading solutions providers to deliver integrated e-BRIDGE certified solutions that will meet all of your print, document management, and content needs. Toshiba is your one-stop solutions provider.

### DOCUMENT CAPTURE

- Easily capture and convert paper documents to electronic files
- Securely manage and share data
- Convert hard copies into a variety of formats, including PDF, TIFF, JPG, and more
- Create searchable and editable files

### DOCUMENT WORKFLOW

- Increase productivity by minimizing steps in current workflows
- Centralize documents for easy retrieval
- Promote collaboration through enhanced capabilities
- Provide enhanced data security and compliance features
- Share secure information through fax or file transfer

### PRINT MANAGEMENT

- Track, measure, and monitor document output
- Ensure efficient use and control of print devices
- Introduce rules-based printing to reduce office output
- Save money while saving the environment with eco-conscious solutions

### SECURITY

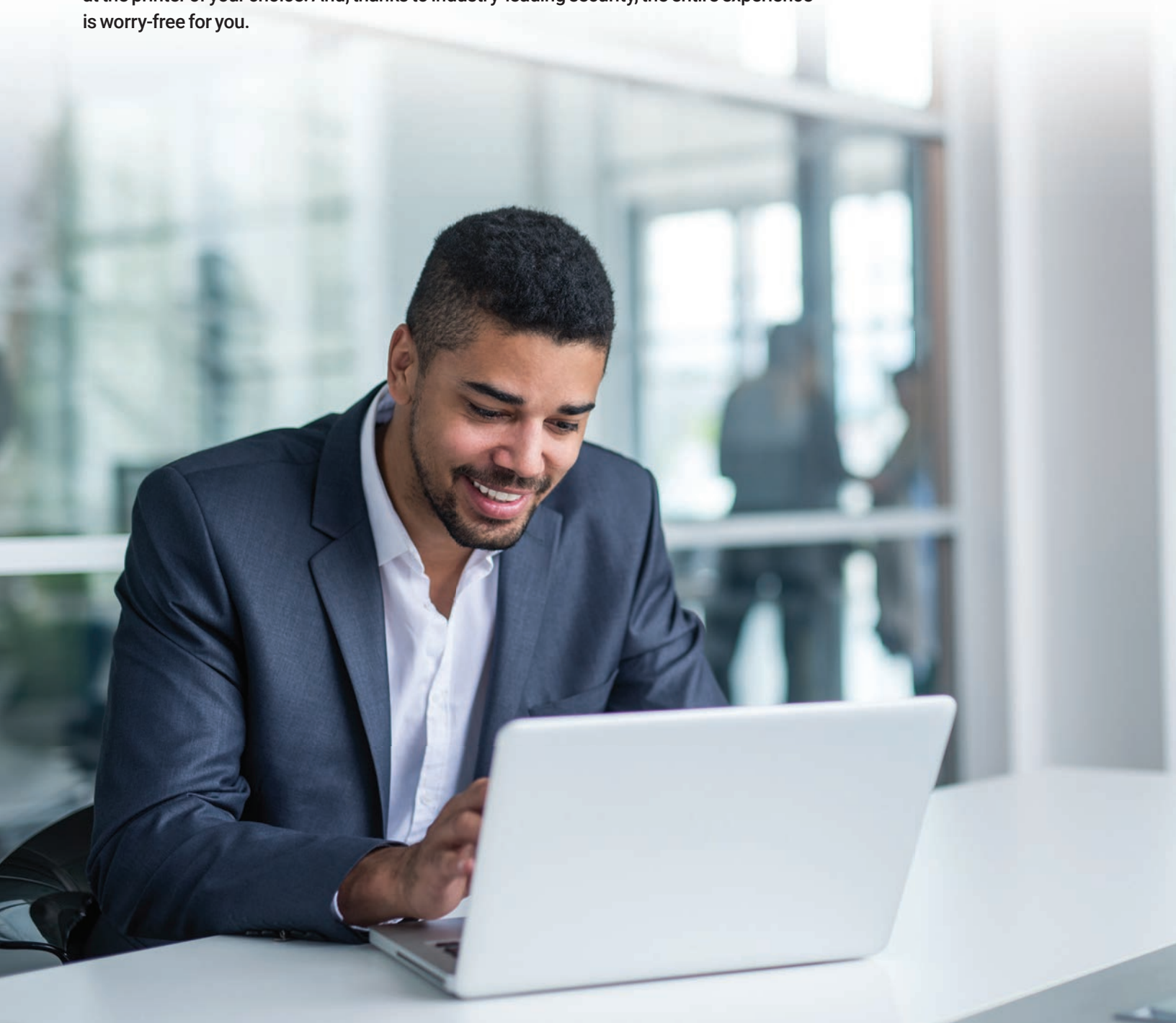
- Keep confidential documents secure
- Prevent unauthorized device access
- Securely store print jobs until they are ready to be collected
- Release jobs via authentication
- Capture walk-up copy usage

### MOBILE PRINTING

- Access business data anytime, anywhere
- Create, access, share and print content
- Maximize office efficiency with increased accessibility and on-the-go printing
- Improve office collaboration with intelligent cloud-based print / scan solutions
- Support dedicated mobile and security features required by BYOD policies

# PRINTING MADE SIMPLE FOR THE ANYWHERE WORKFORCE

As modern work models continue to evolve, proven productivity tools like print can create unique challenges. When employees are traveling, working from home, or are simply on-the-go without easy access to network printers, keeping everyone productive becomes difficult. Fortunately, e-BRIDGE® Global Print simplifies printing from wherever you work, allowing you to send print jobs directly to cloud-connected Toshiba MFPs, and then release when ready at the printer of your choice. And, thanks to industry-leading security, the entire experience is worry-free for you.





## WORRY-FREE PRINTING FROM WHEREVER YOU ARE

While working from anywhere has its advantages, remote printing can be complicated. Many work from multiple locations with different printers at each one, making it difficult to know how to quickly print. Or they can't queue up print jobs from home and release them at work, which disrupts the natural workflow. Remote printing can be a struggle for IT as well. Setting up multiple drivers and print servers puts a strain on an already busy department. Fortunately, e-BRIDGE® Global Print takes the hassle out of printing for employees and IT alike, adding up to a more productive workforce.

### **e-BRIDGE® GLOBAL PRINT MAKES IT EASY TO:**

- Submit print jobs to the cloud from anywhere for location flexibility
- Sign in from Google Workspace™ or Microsoft 365® accounts to quickly enable printing
- Release print jobs on demand conveniently and securely with access card or PIN
- Gain insights into your printing and devices with MFP usage logs
- Eliminate IT overhead associated with managing print servers and more





### **SUBMIT PRINT JOBS TO THE CLOUD**

For your workplace to truly be flexible, employees need to be able to print from their home office, client's office, coffee shop, or from anywhere, really. e-BRIDGE® Global Print makes this easy. Once users simply install the Toshiba universal print driver onto their computer, they can send print jobs from virtually anywhere, and from any network.



### **AUTHENTICATE WITH THE LATEST SECURITY STANDARDS**

With e-BRIDGE Global Print, you can easily sign in from your Google Workspace™ or Microsoft 365® accounts to quickly enable printing. All documents are securely transmitted to and from the cloud hosted by Microsoft® Azure® and Amazon Web Services™ (AWS). And we've also simplified secure authentication by allowing users to log into the MFP using a dedicated PIN, or access card or badge. It's your choice and best of all, little to no training is required.



### **RELEASE PRINT JOBS ON DEMAND**

e-BRIDGE® Global Print ensures that the user has ultimate control over their print jobs. Since a job is submitted to the cloud, it can be printed on demand from any Toshiba MFP, without worry that the printout will be left for others to see. With one simple sign-on from the MFP embedded application, a print job is released when the user is ready to receive it, keeping sensitive documents secure and reducing waste from forgotten printouts.



### **GAIN INSIGHTS INTO PRINT TRENDS AND DEVICES**

Tracking your MFP usage with e-BRIDGE® Global Print comes with distinct advantages. MFP usage logs provide insights into every single print job, regardless of where it originated. This allows the administrator to create reports, making it easier to gain insights on device usage and user productivity.



### **INCREASE FOCUS AND COLLABORATION**

Digital media certainly has its advantages; however, employees often find it easier to stay focused and be more engaged with printed materials. Thanks to e-BRIDGE® Global Print, you can now print from virtually anywhere and pick up meeting materials with ease to allow for increased connection and collaboration, and, ultimately, a rise in productivity.



## **e-BRIDGE® GLOBAL PRINT FROM TOSHIBA**

e-BRIDGE® Global Print from Toshiba provides a simple and secure way of printing for the anywhere workforce. It's easy to set up and start printing in no time, so you can focus on what's important and stay productive without dealing with unnecessary print frustrations – a win-win for everyone.

**CONNECT WITH A CLOUD PRINT EXPERT TO LEARN HOW YOU CAN SIMPLIFY PRINTING FOR WHEREVER YOU WORK.**

**[business.toshiba.com](https://business.toshiba.com)**



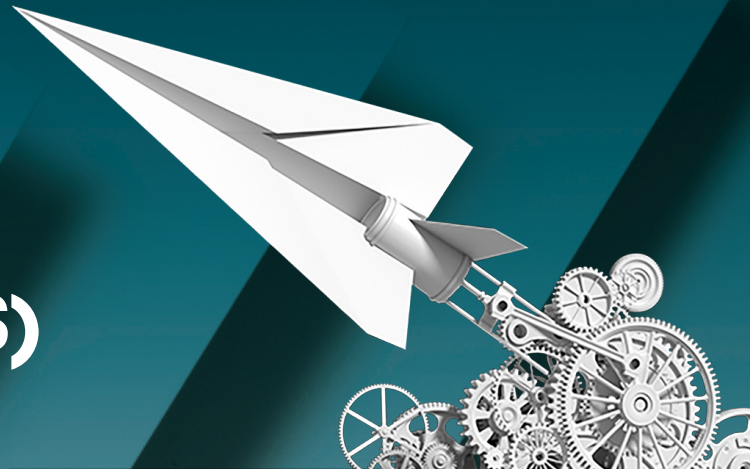
**e-BRIDGE® Global Print is an important part of Toshiba's Elevate Sky™ cloud solutions portfolio. Improving productivity, reducing costs, and increasing security and manageability has never been easier.**

All company and/or product names are trademarks and/or registered trademarks of their respective manufacturers in their markets and/or countries.  
e-BRIDGE marks are the property of TOSHIBA TEC KABUSHIKI KAISHA CORPORATION JAPAN.  
Amazon Web Services, AWS, and the Powered by AWS logo, are trademarks of Amazon.com, Inc. or its affiliates.  
Google Workspace is a trademark of Google LLC.  
Microsoft, Microsoft 365 and Microsoft Azure are trademarks of the Microsoft group of companies.  
© 2022 Toshiba America Business Solutions, Inc. Electronic Imaging Division  
Inv. Code 22406 e-BRIDGE Global Print Brochure 6/22

**TOSHIBA**



# TOSHIBA MANAGED PRINT SERVICES (MPS)



**In today's business climate, reducing and controlling costs is more important than ever. Many organizations overlook the cost of managing documents as an opportunity for savings.**

Toshiba's Managed Print Services is a true client-focused practice that incorporates everything from device management and maintenance of numerous brands to the supply of consumables. It addresses a commitment to decrease paper consumption and power use, while also eliminating waste.

**Toshiba's Managed Print Services provides outstanding service and keeps your operation running smoothly by including the following components:**

- Automated toner replenishment
- High-quality toner and parts for your laser printers, regardless of brand
- National on-site service
- Convenient online portal for service requests and reporting
- Proactive service monitoring

**We have saved companies up to 40% and streamlined their operations by:**

- Immediately reducing printing costs – you pay one fixed cost-per-page price that includes toner, consumables, parts and service; you only pay for what you use
- Enhancing your investment in the equipment you already own
- Simplifying procurement, budgeting, delivery, and service for your output fleet
- Increasing control by providing a single point of accountability for service, supplies and billing

Adopting Toshiba's Managed Print Services offers many benefits. It has yielded clients millions of dollars in annual savings while boosting performance and productivity by managing document costs and document security.

# TOSHIBA



**Elevate is a personalized User Interface for Toshiba MFPs that simplifies both common and sophisticated tasks. Customized to your business needs, this powerfully elegant interface will streamline your document workflow and improve overall organizational efficiency.**

## **ELEVATE WAS DESIGNED WITH YOU IN MIND**

Imagine an MFP tailored for the way your business operates, empowering you to run your business more efficiently. Elevate allows you to do just that, automating multiple steps of common tasks into a single touch operation. It also surfaces many powerful features that users may tend to overlook and brings those to the forefront. No more digging through confusing menus and searching for complicated functions, users can easily access automated custom one-touch functions and newly discovered features quickly and easily. Need to scan to an automated workflow, or copy an odd-sized job? The Elevate UI can be customized to make these complicated tasks as simple as the touch of a button. Elevate also helps increase document security by simplifying the process of protecting printed and scanned documents.

## **EMPOWERED WITH EFFICIENCY**

Elevate enables your MFP to become an essential part of daily business operations by integrating with industry leading document workflow and enterprise content management applications. In doing so, the MFP becomes an on-ramp to digital document workflow and boosts productivity by reducing manual and paper intensive processes in the office. And because time is money, reducing the number of steps in a given task translates directly into savings and greater efficiency. Especially when multiplied by the number of employees performing those steps every day.

## **CUSTOMIZED HELP**

Elevate not only customizes and automates tasks to help your business run more smoothly, the entire look and feel can be tailored specifically for your company's branding. So, whatever your industry, whatever your workflow, Elevate enables you to raise your expectations.

The Toshiba logo is displayed in red, bold, uppercase letters in the top left corner of the image. The background of the entire page is a dark teal with a large, light blue padlock icon in the center, and a Toshiba multifunction printer is shown in the foreground on the right side.

# TOSHIBA

The secureMFP logo features the word "secure" in white lowercase letters, a red padlock icon, and "MFP" in white uppercase letters. The background of the entire page is a dark teal with a large, light blue padlock icon in the center, and a Toshiba multifunction printer is shown in the foreground on the right side.

## secureMFP®

### **A HOLISTIC APPROACH TO SECURITY**

To best tackle your security vulnerabilities, Toshiba takes a unique, comprehensive approach to safeguarding your print and document environments. We look at security in your environment across three areas: product, process and people. The most important component is indeed product security because that is the hub of all your data and human interactions. Once the device is secured, we focus on understanding the processes and people who interact with the device. This allows us to advise you on not just the equipment, but also on the best security methodologies to put in place in your organization. This powerful combination ensures an end-to-end security strategy for your print environment.

### **PRODUCT SECURITY**

Starting at the product level, we deliver an in-depth defense across four areas:

#### **1. INSTALL TO END-OF-LIFE DEVICE SECURITY**

- Self-encrypting hard drive
- Firmware & BIOS whitelisting
- End-of-Life automatic data erase

#### **2. PHYSICAL AND DIGITAL ACCESS PROTECTION**

- Restrict who, what, where
- Manage centrally and by role
- Monitor and audit in real-time

#### **3. DOCUMENT LIFECYCLE DEFENSE**

- Secure document capture
- Encrypt information storage
- Secure document tracking & delivery

#### **4. FLEET-WIDE SECURITY ADMINISTRATION**

- Remote monitoring & management
- Proactive alerts & automatic remediation
- Policy-based security management

# **TOSHIBA TONER IS AVAILABLE AND MANUFACTURED IN THE USA**



With recent toner shortages impacting users across the country, know that our toner is available to you and made right here in Mitchell, SD.

The largest of Toshiba's two global manufacturing plants, it produces more than 1,200 tons of toner annually – that's nearly a million cartridges of black, cyan, yellow, and magenta that make your prints stand out.

The plant in Mitchell focuses on premium levels of quality, environmental sustainability, and occupational health and safety standards within its 25-acre facility. It holds several ISO certifications, and recently celebrated its 35th anniversary.

## **DEDICATED TO KEEPING YOUR BUSINESS RUNNING**

Our US toner manufacturing plant means you're never far from product availability. And, with Toshiba manufactured toner, you're guaranteed the best product for your device.

Our toner:

- **Follows strict ISO manufacturing guidelines**
- **Meets rigorous testing**
- **Delivers high-quality product for consistent results**

From the vibrant colors to beautiful imagery, it takes quality toner to make an impact. And that's what we deliver.



**IF YOU'RE INTERESTED IN LEARNING MORE, PLEASE REACH OUT TO  
YOUR TOSHIBA EXPERT TODAY FOR ALL YOUR NEEDS!**

## OUR AWARD-WINNING LINE UP

### OVERALL

<b>Keypoint Intelligence– Buyers Lab</b>	2019 Pick Award–Elevate 2018–2019 PaceSetter Award
<b>The Cannata Report Annual Dealer Survey</b>	2017 Best in Class Manufacturer 2017 Best A3 Manufacturer 2015 Best in Class Manufacturer 2014 Best in Class Manufacturer
<b>Business Technology Association (BTA)</b>	2017 Channel's Choice Award 2014 Channel's Choice Award
<b>American Business Awards</b>	2015 Silver Stevie, Business to Business Services, Encompass X 2015 Bronze Stevie, New Product/Service of the Year, e-BRIDGE
<b>MarketTools</b>	ACE Award (Achievement in Customer Excellence)
<b>ICX Association</b>	Entertainment Excellence Award Digital Signage at STAPLES Center

### MONOCHROME MFPs

- e-STUDIO4518A**
  - Keypoint Intelligence 2019 Buyers Lab Winter Pick Award
- e-STUDIO4508LP**
  - Better Buys 2019 Innovative Product of the Year
  - American Business Awards, 2018 Gold Stevie Award
  - Better Buys 2017 Editor's Choice
- e-STUDIO5518A/6518A/7518A/8518A**
  - Better Buys 2019 Editor's Choice
- e-STUDIO907/1057/1207**
  - Better Buys 2015 Editor's Choice
- e-STUDIO477s/527s**
  - Better Buys 2013 Editor's Choice

### COLOR MFPs

- e-STUDIO2515AC/3015AC/3515AC/4515AC/5015AC**
  - Better Buys 2019 Innovative Product of the Year
  - Better Buys 2018 Editor's Choice
- e-STUDIO5506AC/6506AC/7506AC**
  - Keypoint Intelligence 2017 Buyers Lab Highly Recommended
  - Better Buys 2017 Innovative Product of the Year
  - Better Buys 2016 Editor's Choice
- e-STUDIO287cs/347cs/407cs**
  - Keypoint Intelligence 2014 Buyers Laboratory Outstanding Achievement for Energy Efficiency – e-STUDIO407cs
  - Better Buys 2013 Editor's Choice



e-STUDIO 4518A



e-STUDIO 4508LP



e-STUDIO 5518A/6518A/7518A/8518A



e-STUDIO 907/1057/1207



e-STUDIO 477s/527s



e-STUDIO 2515AC/3015AC/3515AC/4515AC/5015AC



e-STUDIO 5506AC/6506AC/7506AC



e-STUDIO 287cs/347cs/407cs